

## Automatic Sheet Stackers & Collection Trays



stencil processing



screen printing



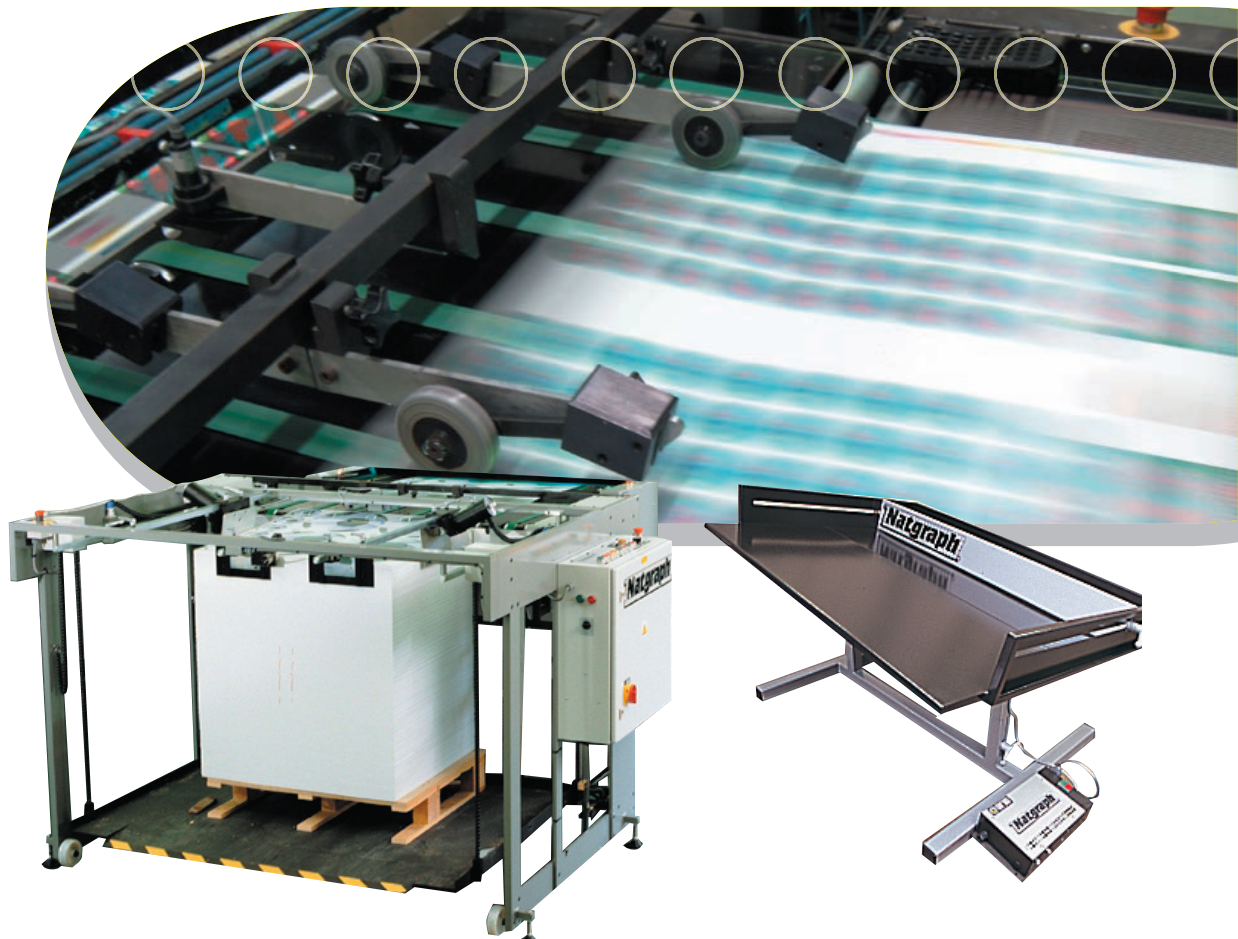
air force



ultra violet



infra red



Natgraph's range of Automatic Sheet Stackers has been developed over many years of experience gained in the production of 100's of these units, in use world-wide. These stackers are available in 8 standard sizes, with purpose built versions for high speed applications and special substrates.

An optional CCTV Stack Monitoring System can be added to allow the print machine

operator to view the operation of the stacker remotely.

Natgraph also manufacture a range of Collection Trays for smaller length print runs, these are available in all 8 standard sizes, as well as special versions for side take off applications. A range of Vibrating Collection Trays is manufactured to all Natgraph's standard dryer sizes.

Automatic Sheet Stackers  
Vibrating Collection Trays

Collection Trays  
CCTV Stack Monitoring System



# Automatic Sheet Stackers & Collection Trays

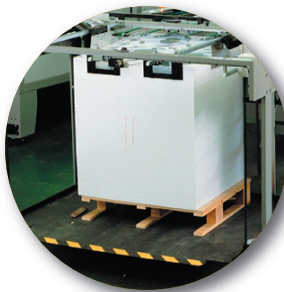
## Automatic Sheet Stackers

### Features

- On demand side/rear jogging
- Air blower system
- Variable speed inlet belts
- Sheet counter
- Sheet 'jam' sensing system
- Feeder stop signals
- Side load/unload option
- Optional vacuum table
- Optional CCTV Stack Monitoring



Automatic Sheet Stacker  
model 185



Precision Stacking

The Natgraph Automatic Sheet Stackers are designed to stack substrates at high speeds, automatically positioning them on top of each other to provide a uniform vertical pile of material that can then be placed in the automatic feeder, to be re-printed with the next colour.

These Stackers are completely self contained with their own drive motor, air blower and hoist. Available in a variety of sizes to suit all print formats, this unit is extremely efficient and versatile, with special versions able to accept sheets at up to 8,000 per hour. A combination of thick plate steel side frames and heavy duty tie bars means these machines are capable of continual operation. The hoist is chain operated with a reinforced steel base plate with ramp front, capable of lifting 1,500kgs.

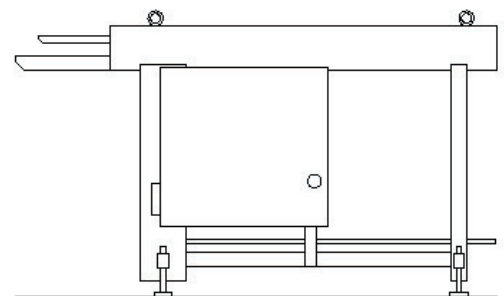
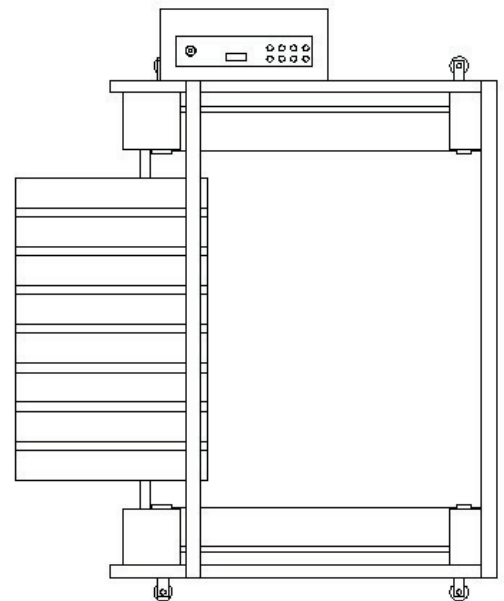
The in-feed section consists of a variable speed, belt driven feed table (vacuum option), with fully adjustable spring loaded delivery wheels and an adjustable air floatation system aiding sheet transfer into the stack. This air system consists of a near silent blower connected to a number of air pipes blowing air under each sheet to create an air cushion as it enters the stacking area.

Stack uniformity is achieved by 2 heavy duty, electro mechanical side joggers, (4 on larger models) and a full width rear jogger. A sheet sensor located above the in-feed table operates the joggers via an adjustable delay timer. The complete rear section of the stacking area moves in and out in conjunction with the side joggers to ensure a positive sheet position against the head lay. The pile is automatically self lowering, with a height sensor and full stack safety cut out device.

Controls consist of variable speed belt drive, hoist raise/lower, blower on/off, sheet counter, feeder stop, emergency stops etc. A 'sheet jam' sensor is built into the stacker's control system, with a feeder stop signal being automatically sent if the stack is full, or a sheet gets caught.

As an option these units can be supplied in the side loading/unloading versions, a CCTV Stack Monitoring System and optional vacuum in-feed table are also available.

These stackers require a three phase power supply.





## Sheet Collection Trays

### Features

- Adjustable sheet stop
- Height and angle adjustment
- Large hand wheels
- 8 sizes
- Castors (Not vibrating model)
- Optional air blower tube
- Optional vibrating model

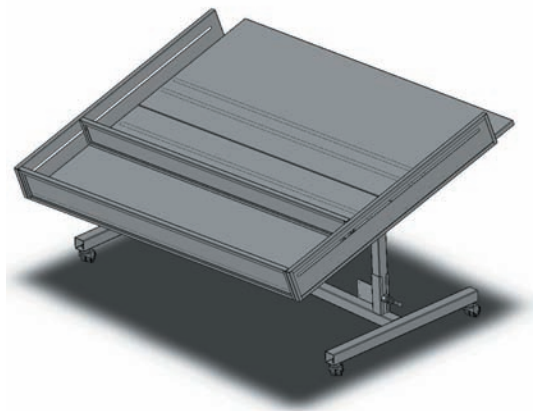


Vibrating Collection Tray model 110

The Natgraph Sheet Collection Trays have been designed to operate with all of the Natgraph dryer sizes, as well as other makes of dryer. They are of a steel construction, with a heavy duty framework and fabricated sheet tray.

The sheet tray has a movable sheet stop to accept different paper sizes whilst the stand is adjustable both in height and angle. The tray can also be tilted to either side so the substrate will fall that way. The box section stand is on swivel castors and is easy to move. An optional air blower tube can be fitted to aid in the delivery of larger or heavier substrates.

A vibrating version is available which will 'jog' the substrate into a neat stack. This version has a special heavy base frame with rubber feet. An adjustable vibrating motor assembly is located below the sheet tray, making it vibrate and move the substrate into one corner. A separate electrical control box requires mounting close by. These units require a single phase power supply.



CCTV Stack Monitoring System

## CCTV Stack Monitoring System

A colour CCTV system can be fitted to all Natgraph dryers, this system includes a freestanding, mast mounted camera above the stacker and a dedicated TV monitor mounted on a fully adjustable stand above the inlet of the

dryer. This allows the operator to see the stacker without leaving the printing machine, which is very important when operating long, high speed, fully automatic printing lines.



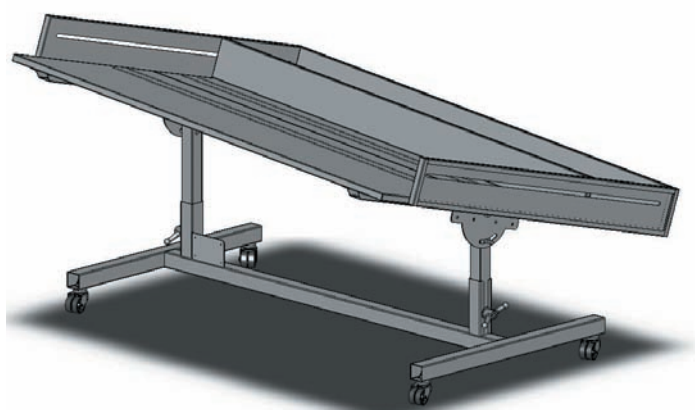
# Specifications

## Automatic Sheet Stackers

Model No.	90	110	130	155	170	185	215
<b>Max. Sheet Size</b>	96 x 78cm (38" x 31")	112 x 86cm (44" x 34")	136 x 96cm (53" x 38")	161 x 119cm (63" x 47")	176 x 139cm (69" x 55")	191 x 154cm (75" x 60")	221 x 165cm (87" x 65")
<b>Height</b>	Belt height of dryer plus 10cm						
<b>Width</b>	156cm (61")	172cm (68")	196cm (77")	221cm (87")	236cm (93")	251cm (99")	281cm (111")
<b>Depth</b>	139cm (55")	157cm (62")	165cm (65")	190cm (75")	210cm (83")	225cm (89")	236cm (93")
<b>Weight</b>	tbc	tbc	tbc	tbc	tbc	tbc	tbc
<b>Voltage</b>	Three Phase 400 Volts 50 Hz. AC						
<b>Power</b>	1kW						
<b>Current</b>	5 Amps						

## Sheet Collection Trays

Model No.	70	90	110	130	155	170	185	215
<b>Max. Paper Size</b>	76 x 68cm (30" x 27")	96 x 78cm (38" x 31")	112 x 86cm (44" x 34")	136 x 96cm (53" x 38")	161 x 119cm (63" x 47")	176 x 139cm (69" x 55")	191 x 154cm (75" x 60")	221 x 165cm (87" x 65")
<b>Height</b>	Belt height of dryer (adjustable)							
<b>Width</b>	91cm (36")	111cm (44")	131cm (52")	151cm (60")	176cm (69")	191cm (75")	205cm (81")	236cm (93")
<b>Depth</b>	74cm (29")	84cm (33")	95cm (37")	102cm (40")	125cm (49")	145cm (57")	160cm (63")	169cm (67")
<b>Weight</b>	tbc	tbc	tbc	tbc	tbc	tbc	tbc	tbc
<b>Voltage</b>	Single Phase 220/240 Volts 50 Hz. AC							
<b>Current</b>	5 Amps (Vibrating models only)							



Distributed by:

**Natgraph**

Download our brochures at [www.natgraph.co.uk](http://www.natgraph.co.uk)